



Art
of
Old Japan

ETHIOPIAN
INSTITUTION

3094



CATALOGUE
OF
RARE OBJECTS
IN
WOOD, PEWTER AND BRASS
ILLUSTRATING THE
ART OF OLD JAPAN

To be Sold at unrestricted Public Sale by order of

MR. BUNKIO MATSUKI

THE SALE WILL TAKE PLACE AT

COPLEY HALL

On MONDAY, TUESDAY and WEDNESDAY
AFTERNOONS

November 9th, 10th, and 11th

At Two-Thirty O'clock

LEONARD & CO., Auctioneers

1903

PREFATORY NOTES

MR. MATSUKI, as a descendant of a famous architect and temple builder, has had an opportunity as a collector which could occur to no other man. His maternal grandfather, Bansai Tatekawa to whom was entrusted the restoration of several ancient Shinto and Buddhist shrines, became in this way the owner of carved and painted decorations removed from the crumbling structures. These formed the basis of his collection, which is the result of the combined efforts of Mr. Matsuki, an able Japanese connoisseur, and other Japanese. Since Mr. Matsuki first opened an exhibition of wood carvings in Copley Hall, Boston, and at the American Art Association Galleries in New York, the public has been greatly interested, and many fellow countrymen have seized the opportunity and offered collections of a like nature for sale. Collectors and connoisseurs are well aware that it is becoming increasingly difficult to secure really fine examples of the arts of old Japan, and the task is further complicated from the fact that so much is copied by wood carvers of the present day. It has ever been Mr. Matsuki's aim to aid the public in obtaining authentic and genuine articles. For commercial purposes solely Mr. Matsuki has refrained from stating in this catalogue the absolute sources from which many of the objects were obtained. He does not, however, take this position with any intention of being indefinite, and on the other hand he will be willing and most pleased to impart any information within his knowledge, either written or verbally, concerning articles for sale at any time during the exhibition or thereafter at the pleasure of his customers. The fact that he has heretofore given minute information concerning the origin of the articles presented has greatly hampered him in getting together the present collection as others are believed to have taken advantage of such.

1,37
M 42 ✓
1903

Pewter The ancient Chinese and Japanese *Pewters* in this collection are probably the first examples of this interesting metal ever offered for sale in this country. The basis of the Chinese *Pewter* is undoubtedly in almost every case silver-ware. The early Japanese artisans very often used gold as well as silver in composition of their metals and when combined the effect is often that of black spots appearing upon the surface, much like the Shakudo composition. It is not known how early the first of the *Pewter* was produced in China, but there is an authentic account of the production of this metal as far back as the Sung-Dynasty, 10th and 11th century, many *Pewter* vessels being used during that period, particularly in the tea service. It is not possible, however, to trace any absolute line of manufacturers or artists engaged in the production. At an early period in Japan *Pewter* wares were much in use, being imported from China about the middle of the 16th century, probably as the result of interest shown in all lines of art by the great Hideyoshi, who it is known, greatly encouraged production of vessels in *Pewter*. Among most famous *Pewter* makers of contemporaries we find Mimasaka-no-Kami of Kioto who used the stamp Tenka-Ichi (second to none), Mimasaka-no-Kami, Iwamino-Kami, Suzuya Yohei, etc. Tea caddies of *Pewter* are known to possess a superior virtue in preserving the tea, and have been much sought by the well-known Chanoyu, or Tea Drinking Society.

RULES AND CONDITIONS

Bills payable in cash before delivery.

Bills must be sent for delivery of goods.

Goods to be removed at the expense and risk of purchaser, immediately after the sale.

Goods not removed on the day of sale remain at the risk of the purchaser.

No claims allowed after the removal of goods.

Articles are exposed for examination, and are sold without guaranty.

Articles are resold at the expense and risk of the purchaser.

Deposits must be given when requested.

Our record of sales in all cases final.

Orders to buy executed without charge.

LEONARD & CO., Boston.

FIRST DAY SALE

Monday Afternoon at 2.30 o'clock, Nov. 9, 1903

1 **Oval Wall Frame.**

Bamboo forest in snow with sparrows.

Date 1600. Height 38 in. Width 15 in.

2 **Oval Wall Frame.**

Stork in bamboo grove. Carved in relief and painted in green, white and gold.

Date 1600. Height 38 in. Width 15 in.

3 **Jingoro Lion.**

Rare uncolored specimen by great master of carving. The attitude of the animal looking down from cliff and style of peony flowers suggest great skill and vitality.

Date 1580. Length $34\frac{3}{4}$ in. Height $10\frac{1}{2}$ in.

4 **Old Temple Carving.**

Hatei with two children, carved of oak. Rare old example.

Date 1500. Length $27\frac{1}{2}$. Width 13 in.

5 **Carved Ramma.**

Plum flower and nightingale.

Date 1750. Length 40 in. Width 19 in.

- 6 **Zashiki Ramma.**
Bamboo tree carved out of Yoshino fir-tree, painted in green.
Date 1650. Length 47 in. Width 12½ in.
- 7 **Jingoro Dragon.**
Carved of cedar and painted. Head of the dragon is larger than usual Jingoro specimen ; is an important example.
Date 1570. Length 20 in. Width 10½ in.
- 8 **Small Wood Carving.**
Shishi and peony, in oak.
- 9 **Old Palace Carving.**
Duck swimming in water, carved in oak and colored.
Date 1700. Length 46 in.
- 10 **Carved Temple Ornament.**
Conventional lotus flowers carved in fir tree wood and gold lacquered. Fine example of 16th century.
Height 26 in.
- 11 **Carved Zashiki Ramma.**
Rabbit on waves, carved in oak.
Date 1600. Length 44 in.
- 12 **Fourfold Lattice Screen.**
Each panel has rabbit carvings. All the lattice work is coated with gold lacquer.
Date 1680. Height 70 in. Width 13½ in.

- 13 **Pewter Tray.**
Plum, peach, bat and orchid, all inlaid with gold surfaced brass. Mark Sugo.
Date 1690. Length 10 in. Width 7 in.
- 14 **Pewter Jewelry Box.**
Octagonal form, the figures of wise men carved in minute detail in relief.
Date 1550.
- 15 **Old Pewter Box.**
Floral design inlaid with brass. Fine example.
Date 1550.
- 16 **Chinese Pewter Tea Caddy.**
Brass inlaid ornament of floral design. Mark Teujun.
Date 1780. Height 4½ in.
- 17 **Pewter Wine Pot.**
Plum, bamboo and pine design carved on body.
Date 1780. Height 4 in.
- 18 **Pewter Tray.**
Design, two figures among clouds inlaid with gold surfaced brass.
Date 1600. Length 12¾. Width 8 in.
- 19 **Pewter Vase.**
Flaring at top, Unkaku design carved on the body.
Date 1650. Height 7½ in.

- 20 **Chinese Pewter Vase.**
Tall slender neck with crawling dragon.
Date 1750. Height $8\frac{1}{4}$ in.
- 21 **Pewter Bowl.**
In form of squash flower, fine pale blue
tone. By Suzuya Ihei.
Date 1700. Height $4\frac{1}{2}$ in.
- 22 **Pewter Haisen Bowl.**
Crane on wave carved on the bowl.
Date 1760. Height $5\frac{3}{8}$ in.
- 23 **Chinese Pewter Tea Caddy.**
Bamboo design inlaid with brass. Mark
Ten Jun.
Date 1750. Height 5 in.
- 24 **Chinese Pewter Tea Caddy.**
The surface somewhat corroded, with three
ring handles on shoulder. Mark Yeiminsei.
Date 1550. Height $4\frac{1}{2}$ in.
- 25 **Chinese Pewter Tray.**
Inlaid in brass, the design of dragon and
cloud. Imperial palace use. Rare ex-
ample.
Date 1480. Length $13\frac{1}{2}$ in. Width $9\frac{3}{4}$
in.
- 26 **Chinese Pewter Tea Caddy.**
Hexagonal inlaid brass ornaments. Mark
Tei Chin Sei.
Date 1600. Height 4 in.

- 27 **Chinese Pewter Tea Pot**
Square form, floral and landscape design
carved in low relief. Mark Yoyoku.
Date 1750. Height $5\frac{1}{4}$
- 28 **Chinese Pewter Tea Pot.**
Square form, plain surface bluish gray
tone. Mark Royei.
Date 1750. Height 6 in.
- 29 **Pewter Dish.**
Octagonal form, cherry crest perforated
at each corner. Grayish-blue patina.
Date 1680. Diameter 8 in.
- 30 **Palace Ramma.**
Wild geese and reed grass, very high re-
lief, carved of oak. Beautiful blue tint.
Date 1550. Length 51 in. Width 18 in.
- 31 **Temple Carving.**
Head of Shishi in oak and painted in
green.
Date 1700. Height $9\frac{1}{2}$ in. Length 26 in.
- 32 **Carved Temple Ornament.**
Head of Shishi in oak and painted in
green.
Date 1700. Height $9\frac{1}{2}$ in. Length 26 in.
- 33 **Palace Ramma.**
Stork and pine tree, carved in oak.
Various coloring.
Date 1700. Length 36 in. Width $18\frac{1}{2}$ in.

- 34 **Carved Howo Bird.**
In oak, treated with various colors.
Date 1700. Height 11 in. Length 33 in.
- 35 **Small Frieze Carving.**
Duck in iris pond, carved in oak and colored.
Date 1780. Length 25 in. Width 7 in.
- 36 **Temple Carving.**
Shishi and Peony design in oak and colored.
Date 1750. Length 31 in. Width 48 in.
- 37 **Carved Wood Figure.**
Kwan-u swinging drawn sword, carved in oak and colored.
Date 1770. Height 18 in.
- 38 **Carved Wood Figure.**
Chohi a Chinese warrior with spear, carved in oak and colored.
Date 1770. Height 15 in.
- 39 **Carved Wood Figure.**
Shoki holding Oni with drawn sword.
Date 1770. Height 12 in.
- 40 **Temple Carving.**
Children playing around a broken jar, carved of oak uncolored.
Date 1500. Length 26 in. Width 10 $\frac{1}{3}$ in.

- 41 **Old Temple Carving.**
Dragon carved of fir tree and colored.
Date 1500. Length 34 in. Width $8\frac{1}{2}$ in.
- 42 **Carved Temple Panel.**
Conventional cloud form, Bishamon punishing imp fleeing with sacred miniature pagoda.
Date 1700. Height 29 in. Width $28\frac{1}{2}$ in.
- 43 **Pair of Temple Ornaments.**
Heads of dolphins, carved in oak.
Date 1600.
- 44 **Old Carved Ramma.**
Peony flowers and leaves.
Date 1650. Length 68 in. Height 13 in.
- 45 **Pewter Bowl.**
In form of flower with fancy scalloped edge. Fine quality. By Suzuya Yayemon.
Date 1680. Height $3\frac{1}{8}$ in.
- 46 **Pewter Haisen Bowl.**
Crane and cloud pattern.
Date 1800. Height 6 in.
- 47 **Pewter Haisen.**
Floral pattern carved on the bowl.
Date 1700. Height $5\frac{1}{4}$.
- 48 **Chinese Pewter Tea Caddy.**
Square form, carved with Chinese poetry.
Mark Tendo.
Date 1800.

- 49 **Pewter Tea Caddy.**
Olive green tone, floral design. Mark
Josoku.
Date 1650. Height 6½ in.
- 50 **Chinese Pewter Tea Pot.**
Hexagonal form, standing figure of
Kwan-non and Chinese letters in relief.
Date 1700. Height 5¾ in.
- 51 **Old Pewter Dish.**
Square form, perforated hawk feather
crest at four corners. Rare example.
Date 1700. 10¼ in. square.
- 52 **Pewter Saucers (8 in set).**
Cherry decoration, finely carved. Mark
Gan-wa-Jun.
Date 1660.
- 53 **Pewter Saucers (10 in set).**
Plum flowers inlaid in brass.
Date 1750.
- 54 **Old Pewter Saucers (5 in set).**
Ancient Komon dragon pattern, minutely
carved.
Date 1750.
- 55 **Old Palace Door.**
Tiger on a rock in bamboo grove.
Painted by Okio.
Date 1770. Height 67 in. Width 28 in.



300

301

- 56 **Pair of Zashiki Doors.**
Made of Satsuma cedar and painted with figures and stork under plum tree in full blossom. Attributed to Tosa Mitsunari.
Date 1680. Height 67 in. Width 37 in.
- 57 **Carved Zashiki Ramma.**
Brood of chickens and drum clung by ivy vines.
Date 1800. Length 52 in. Height 14 in.
- 58 **Carved Figure of Monju.**
Seated on Shishi with stick, carved in oak and colored.
Date 1700.
- 59 **Carved Lion.**
In oak and colored.
Date 1600.
- 60 **Carved Peony Flower.**
Uncolored oak.
Date 1400.
- 61 **Carved Temple Ornament.**
Ten-nin with lotus bud and leaf in attitude of hovering in sky. Carved in oak and colored.
Date 1750. Length 26 in. Height 15 in.
- 62 **Carved Shrine Ramma.**
Mountain pheasants, peony and iris flowers, carved in cedar in minute detail, charmingly treated with various colors.
Date 1730. Length 50 in. Height 8½ in.

- 63 **Zashiki Ramma.**
Sparrows in bamboo grove, carved in uncolored oak.
Date 1780. Length $51\frac{1}{2}$ in. Height $8\frac{1}{2}$ in.
- 64 **Companion to the above.**
- 65 **Carved Altar Stand.**
Two carved panels of delicate Howo bird design and elaborately carved legs.
Date 1700. Height 18 in. Length 34 in. Width 15 in.
- 66 **Carved Altar Stand.**
Panel is carved with a design of water plant in bloom, Rinbo crests and cloud.
Date 1700. Height 14 in. Length 37 in. Width $16\frac{1}{2}$ in.
- 67 **Carved Altar Stand.**
Lotus flower design, very beautiful example.
Date 1500. Height $9\frac{1}{2}$ in. Length 28 in. Width 14.
- 68 **Old Palace Door.**
Old plum tree in blossom, painted by Kano Tanyu.
Date 1660. Height $68\frac{1}{2}$ in. Width $38\frac{1}{2}$ in.
- 69 **Old Carved Mask.**
Face of howling Hauniya.
Date 1550. Height 10 in.

- 70 **Carved Mask.**
 Representing the face of Rikijin, deity of energy. A specimen of Nara period.
 Date 900 A. D. Height 11½ in.
- 71 **Old Temple Dancing Mask.**
 Face of Zizaiten, a Hindoo deity.
 Date 1700. Height 10 in.
- 72 **Old Nara Mask.**
 Carved in wood, represents a face of Oni.
 Twelfth century.
 Height 18 in.
- 73 **Temple Ramma.**
 Tsuru-Sennin, borne on back of flying stork. Clouds, floral background.
 Length 49½ in. Height 21 in.
- 74 **Temple Ramma.**
 Mino turtle pursued by stork over crested waves and clouds, delicately carved in relief.
 Length 49½ in. Height 14 in.
- 75 **Pair of Juniten.**
 Carved of cedar and colored. Superb quality.
 Date 1300. Height 23 in.
- 76 **Palace Ramma.**
 Iris flowers blossoming in water, carved of oak and colored; gold frame.
 Date 1720. Length 53½ in. Width 21 in.

- 77 **Carved Shishi.**
The animal lying down, carved of oak
and coated in gold lacquer.
Date 1600. Length 27 in.
- 78 **Old Temple Ramma.**
Peacock and peony design, carved in oak
and colored in green and subdued red.
Date 1450. Length 52 in. Width 25 in.
- 79 **Old Temple Ramma.**
Howo bird and Kiri flowers design.
Companion piece to the above.
- 80 **Old Temple Ramma.**
Chrysanthemum in wave, carved in cedar
and painted in pink and blue.
Date 1750. Length 50 in. Width 8 in.
- 81 **Old Gable Carving.**
Conventional cloud design with Chinese
character for water carved in relief on
center.
Date 1200. Height 32½ in.
- 82 **Temple Carving.**
Shishi and peony in oak and painted in
deep green and brown.
Date 1700. Height 20 in.
- 83 **Carved Scripture Stand.**
Panel and pine tree and flower design.
Date 1750. Height 13 in. Length 27½ in.



- 84 **Temple Carving.**
Uncolored oak, shishi and peony, carved on each side; high quality of wood carving.
Date 1650. Length 38 in. Height $9\frac{1}{2}$ in.
- 85 **Old Gable Carving.**
Conventional cloud form in oak, uncolored.
Date 1400. Height 27 in.
- 86 **Pewter Box.**
Round with cover, three figures inlaid with brass.
Date 1680.
- 87 **Old Pewter Box.**
Conventional floral design carved on the cover.
Date 1590.
- 88 **Pewter Bonbon Box.**
Landscape design carved on cover. Mark Keishodo.
Date 1780.
- 89 **Old Pewter Dish.**
Octagonal form inlaid with various birds and flowers in amber bronze. Rare and costly example.
Date 1500. Height 2 in.
- 90 **Pewter Tea Caddy.**
Inlaid brass ornamentation.
Date 1700. Height $4\frac{1}{4}$ in.

- 91 **Chinese Pewter Tea Caddy.**
Square form, brass inlaid decoration.
Mark Tenjun.
Date 1740. Height 4 in.
- 92 **Chinese Pewter Tea Caddy.**
Landscape wrought out in panels in low relief.
Date 1600. Height 4 in.
- 93 **Pewter Tea Caddy.**
Design of camelia flowers inlaid in brass. Fine quality.
Date 1700. Height 4 in.
- 94 **Pewter Tea Jar.**
Square form, inlaid, with designs of birds and flowers. Mark Yeiko.
Date 1680. Height 4 in.
- 95 **Pewter Tea Pot.**
Spout, handle and knob are neatly set with jade, Chinese characters carved on the body.
Date 1650. Height 4¼ in.
- 96 **Pewter Tea Caddy.**
Wise man design inlaid in brass.
Date 1630. Height 4 in.
- 97 **Pewter Wine Jug.**
Dragon in low relief carved in panel.
Date 1750. Height 6 in.

98 Pewter Wine Pot.

Corroded rough surface, black, unpolished; stories of sacred island carved in low relief.

Date 1600. Height $7\frac{1}{2}$ in.

99 Temple Wood Carving.

Lion and peony in oak.

Date 1800. Height 28 in. Width 11 in.

100 Temple Carving.

Goddess of Sun riding on dragon and golden cloud, mounted on fan-shaped board.

Date 1550.

101 Pair of Temple Carvings.

Buddhist image on cloud carved in high relief and mounted on gold lacquered panel.

Date 1450. Height 15 in.

102 Another Pair.

Height $10\frac{1}{2}$ in.

103 Carved Round Panel.

Lion and peony on rock, carved in oak in low relief, rich green tone,

Date 1600. Diameter $21\frac{1}{2}$ in.

104 Carved Howo Bird.

In oak and colored.

Date 1750.

- 105 **Carved Temple Carving.**
Dragon carved in oak and colored.
Date 1600. Length 48 in. Height 12½ in.
- 106 **Companion Piece to the above.**
Tiger and bamboo.
- 107 **Carved Temple Panel.**
Upright panel lotus flowers and leaves
carved in fir tree and treated in various
colors and gold.
Date 1780. Height 45½ in. Width 14 in.
- 108 **Companion to the above.**
- 109 **Small Temple Carving.**
Dragon design.
Date 1750. Length 29 in.
- 110 **Two-fold Lattice Screen.**
Spirits of thunder and wind, carved in
cedar and treated with costly pigment,
inserted in lattice work which is coated with
dull gold lacquer and lined with gold
brocade.
Date 1650. Height 72 in. Width 31 in.
- 111 **Carved Temple Carving.**
Dragon, carved in oak and painted in
deep green.
Date 1600. Length 44 in.



327—A

- 112 **Small Shrine Ramma.**
Peony flowers and leaves in oak and colored in green and pink.
Date 1680. Length 36 in. Width $7\frac{1}{2}$ in.
- 113 **Small Temple Ramma.**
Four Chinese sages carved in oak.
Date 1680. Length 32 in. Width $9\frac{1}{2}$ in.
- 114 **Carved Howo Bird.**
In oak and colored.
Date 1750.
- 115 **Carved Palace Panel.**
Flying Howo bird, carved in cedar and coated in gold, mounted on cedar frame.
Date 1700. Length 45 in. Height 24 in.
- 116 **Old Zashiki Carving.**
Figure of Hideyoshi with his stuff under the pine tree, carved in very high relief.
Length 27 in. Height $18\frac{1}{2}$ in.
- 117 **Three Old Masks.**
Framed on dull gold board.
Date 1400.
- 118 **Carved Temple Ramma.**
Lotus flowers and leaves profusely carved out in relief. Beautiful gold effect.
Date 1650. Length $53\frac{1}{2}$. Height 8 in.

- 119 **Palace Ramma.**
Rabbits running on the water. Rare
old specimen.
Date 1600. Length 39 in. Width 18 in.
- 120 **Painting on Wood.**
Old pine tree painted on cedar; gold
lacquer frame.
Date 1680. Height 17½ in. Length 33½.
- 121 **Wood Carving.**
Dragon and water, dull red and faded
green, carved of oak.
Date 1700. Length 33 in. Width 6½ in.
- 122 **Temple Ramma.**
Dragon and cloud subdued green and
gold.
Date 1680. Length 42½ in. Width 8½ in.
- 123 **Temple Ramma.**
Conventional peony carved of oak.
Date 1580. Length 42 in. Width 7½ in.
- 124 **Figure of Yemma.**
Carved in cedar and colored.
Date 1400. Height 15 in.
- 125 **Old Temple Carving.**
Howo bird carved of oak.
Length 32 in. Height 12 in.
- 125A **Old Temple Carving.**
Length 31 in. Height 5 in.

126 Old Temple Ramma.

Dragon and cloud carved of oak and painted. Very important specimen on account of its quality and age.

Date 1500. Length 37 in. Width $5\frac{1}{4}$ in.

127 Shrine Carving.

Mice and melon carved of fir tree.

Date 1580. Length 32 in. Height 6 in.

128 Palace Ramma.

Howo bird and Kiri flowers, carved of oak in very high relief. Green coloring.

Date 1680. Length $50\frac{1}{2}$ in. Width 18 in.

129 Pair of Temple Carvings.

Bunch of chrysanthemum carved of oak treated with dull red color.

Date 1550. Length $26\frac{1}{2}$ in. Height 7 in.

130 Carved Temple Ornament.

Head of Shishi looking downward, in oak, painted in green.

Date 1700. Length 26 in. Height $9\frac{1}{2}$ in.

131 Small Temple Ramma.

Dragon swimming in water carved, in oak low relief, and painted in green, blue and red.

Date 1650. Length $33\frac{1}{2}$ in. Height 8 in.

132 Carved Dragon.

Date 1750.

- 133 **Carved Dragon.**
In oak and painted in bright colors.
Date 1750. Length 24 in. Height 6 in.
- 134 **Temple Scripture Stand.**
Panels are carved with design of conventional cloud. Richly ornamented with brass kanamono.
Date 1700.
- 135 **Old Wood Carving.**
Hanging ornament in form of tiger.
Eyes are inlaid with glass and treated with gold, very rare and fine example.
Date 1650.
- 136 **Large Temple Ramma.**
Group of lions in peony garden. Extraordinary specimen, carved from one piece of oak and colored in green, red and gold. Frame is ornamented with brass kanamono.
Date 1780. Length 86 in. Width 29 in.
- 137 **Zashika Ramma.**
Chrysanthemum and water. Delicate blue and dull red.
Date 1650. Length 69 in. Width 8 in.
- 138 **Small Temple Ramma.**
Lions in peony garden, green and red.
Date 1700. Length 51 in. Width 5 in.

- 139 **Pair of Zashiki Ramma.**
Scenery of Sumi Yoshi beach, carved of cedar, portraying lighthouse and part of temple ground with stone lantern.
Date 1700. Length 54 in. Width 10½ in.
- 140 **Palace Ramma.**
Howo bird carved of oak. Dull gold lacquer on the carving. Peacock carved of oak, dull gold and green.
Date 1400. Length 25 in. Width 17 in.
- 141 **Carved Carp.**
Date 1780. Length 16½ in.
- 142 **Large Carp.**
Carved in oak and polished.
Date 1750. Length 28 in.
- 143 **Carved Tai Fish.**
Date 1600. Length 13½.
- 144 **Temple Ramma.**
Elaborately carved with design of lotus flowers growing in water. Motion of blowing wind is admirably carved out. Treated in various colors and gold.
Date 1780. Length 62½ in. Height 20 in.
- 145 **Old Painted Ramma.**
Cockerel and hen painted on gold lacquered background, by Okio, founder of Shijio school.
Date 1760. Length 61½ in. Width 19 in.

- 146 **Temple Ramma.**
Conventional peony design of rare delicate pattern. Carved of oak and colored.
Date 1650. Length 57½ in. Width 10 in.
- 147 **Carved Carp.**
Date 1750. Length 18½ in.
- 147 **Carved Fish.**
In oak, slightly lacquered.
Date 1700. Length 14½ in.
- 149 **Carved Fish.**
Holding precious stone in mouth.
Date 1750. Length 16 in.
- 150 **Ancient Chinese Pewter Tea Pot.**
Stands on tripod dark gray tone. Rare example.
Date 1500. Height 6¼ in.
- 151 **Pewter Tea Caddy.**
Landscape minutely carved, fine quality.
Date 1700. Height 3½ in.
- 152 **Pewter Tea Caddy.**
Landscape carved on the body of caddy.
Date 1710. Height 3½ in.
- 153 **Pewter Box with Cover.**
Minutely carved with floral design fine silvery patina. Mark Shinwa.
Date 1650. Height 4 in.

- 154 **Pewter Covered Box.**
Spotted patina of rare quality. Band
around body has carved karakusa ornament.
Date 1640. Height 3 in.
- 155 **Pewter Tea Caddy.**
Inlaid brass ornament. Mark Otobun.
Date 1780. Height 4 in.
- 156 **Pewter Wine Pot.**
Carved Howo bird decoration. Superb
quality.
Date 1690. Height 8 in.
- 157 **Chinese Pewter Tea Pot.**
Plain silvery patina with brass handle.
Date 1800. Height 5½ in.
- 158 **Pewter Wine Pot.**
Dragon and cloud design in low relief.
Date 1700.
- 159 **Pewter Wine Pot.**
Pine, bamboo and plum carved in low re-
lief.
Date 1700.
- 160 **Pewter Wine Pot.**
Unpolished pewter of rare example.
Mokko design in relief. Beautiful gray
patina.
Date 1700.

- 161 **Pewter Tray.**
Oval shape, floral design carved in low relief.
Date 1650.
- 162 **Small Square Pewter Tray.**
Pine tree and palm inlaid with brass.
Date 1700.
- 163 **Large Ancient Nara Mask.**
Face of Hanniya. Very rare old mask.
Ninth century. Height 16 in.



SECOND DAY SALE

Tuesday Afternoon at 2.30 o'clock, Nov. 10, 1903

164. Old Dancing Mask.

Face of Rariuwo or King of Sea, carved
in wood and gold lacquered.

Date 1650. Height 13 in.

165. Noh Dancing Mask.

Face of Hanniya.

Date 1600. Height 11 in.

166. Old Temple Dancing Mask.

Face of Yosha.

Date 1700. Height 9 in.

167. Old Temple Dancing Mask.

Face of Raseteu.

Date 1600. Height 9½ in.

168. Pair of Juniten.

Carved in cedar and painted.

Date 1300. Height 23 in.

169. Carved Shrine Ramma.

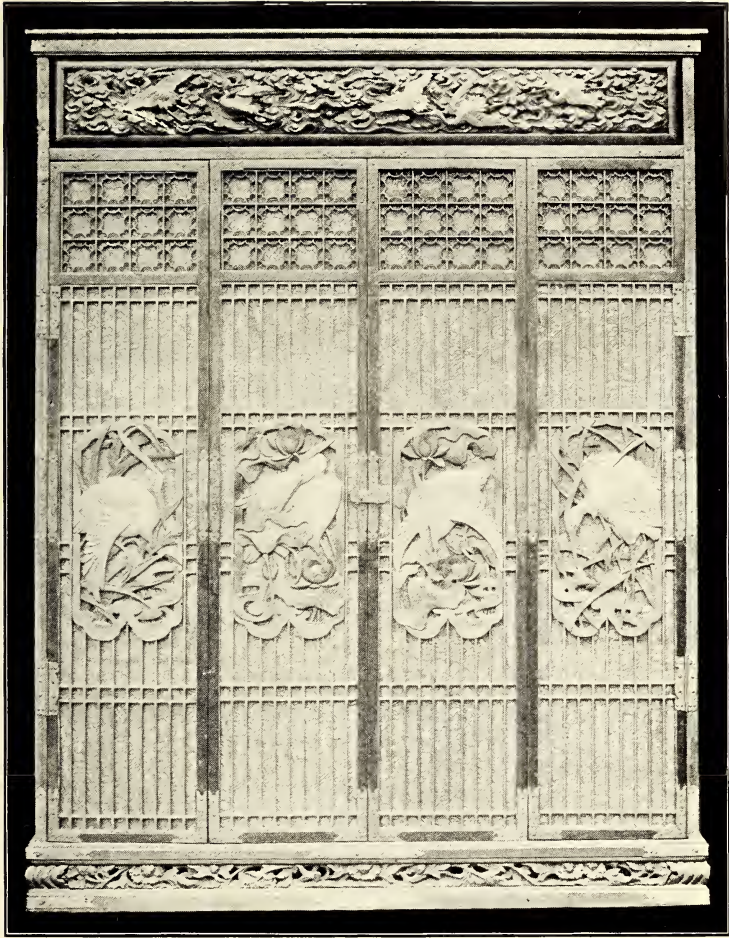
Group of wise men in bamboo grove,
carved in oak. Has carved signature on
the back as follows: Third generation of
Idzuminokami Chika-fusa.

Date 1720. Length 50 in. Height 8½ in.

170. **Small Shrine Ramma.**
Flock of birds in plum tree in blossom,
carved in cedar and colored.
Date 1650. Length 37½ in. Height 7½ in.
171. **Old Temple Porch Ramma.**
Peony flowers and water design, carved
of cedar and colored.
Date 1600. Length 36 in. Height 15 in.
172. **Carved Wood Figure.**
Taiso, a Chinese King of Sung Dynasty,
seated on throne chair, beautifully colored
and gilded.
Date 1680. Height 9 in.
173. **Carved Wood Figure.**
Representing the famous zen priest. Fine
coloring.
Date 1600. Height 18 in.
174. **Carved Wood Figures.**
Zizaiten standing on hands of another
deity. Fine carving.
Date 1650. Height 10 in.
175. **Pair of Carved Wood Figures.**
Representing nobilities.
Date 1600. Height 5½ in.
- 176 **Companion to the above.**
Height 16½ in.

- 177 **Carved Wood Figure.**
Karako standing in attitude of clapping hands, fine subdued coloring.
Date 1500. Height 18½ in.
- 178 **Old Palace Door.**
Painted with design of bamboo trees partially covered by snow. The work is attributed to Kano Shoyei.
Date 1680. Height 70½ in. Width 32 in.
- 179 **Old Palace Door.**
Made of Yoshino cedar, tiger howling under bamboo tree. Painted by Kano Yeitoku.
Date 1620. Height 65 in. Width 29½ in.
- 180 **Old Palace Door.**
One side is painted with shishi and peony and reverse side chrysanthemum flowers. By Kano Tanyu.
Date 1660. Height 66½ in. Width 31½ in.
- 181 **Carved Palace Ramma.**
Lotus plants in blossom growing in water, carved in Kiso fir tree wood and colored.
Date 1770. Length 48 in. Height 17½ in.
- 182 **Carved Temple Ramma.**
Group of figures in plum garden and bamboo trees and tiger on left, carved in oak and colored.
Date 1750. Length 49 in. Height 10½ in.

- 183 **Carved Shrine Ramma.**
Conventional peony flower and leaves,
carved in oak and colored, work is of
highest quality.
Date 1600. Length 54 in. Width 7 in.
- 184 **Carved Shrine Ramma.**
Peony flowers and leaves, carved of cedar
and colored, small but very important ex-
ample of wood carving.
Date 1580.
- 185 **Small Temple Carving.**
Kirin carved in floral shaped frame.
Date 1600.
- 186 **Old Temple Carving.**
Conventional lotus design, carved inside
of floral shape frame.
Date 1650.
- 187 **Three Small Carvings.**
Camelia flowers and leaves, carved in
cedar and colored.
Date 1700.
- 188 **Old Palace Carving.**
Two imperial crests enveloped in Kara
Kusa design.
Date 1650.
- 189 **Carved Round Panel.**
Goddess of Sun, carved in wood and set
in center of panel coated with gold lacquer.
Effect of halo is delicately executed.
Date 1600.



- 190 **Temple Scripture Stand.**
Simple cloud design without carved panel. Gold lacquered.
Date 1600.
- 191 **Temple Altar Stand.**
Two panels, carved with shishi and peony. Superb coloring. Important specimen.
Date 1480.
- 192 **Temple Altar Stand.**
Panels carved with design of Tachibana fruit.
Date 1600.
- 193 **Old Palace Carving.**
Dragon with neck erect, emerging from cloud. Motion of water is admirably executed, the carver cleverly adopted the style of Ririumin, famous painter of Sung dynasty of China.
Date 1660. Height 18 in. Length 30½ in.
- 194 **Old Palace Carving.**
Tiger crouching in bamboo grove, carved in oak and treated with colors on gold ground.
Date 1660. Height 18 in. Length 30½ in.
- 195 **Carved Dog-Fu.**
A very early specimen of wood carving.
Date 13th century. Height 13 in.

- 196 Companion to the above.
- 197 **Small Altar Stand.**
Peony flower design carved on panel.
Gold lacquered.
Date 1650.
- 198 **Temple Scripture Stand.**
Peony flowers carved on two panels.
Brass Kanamono ornament.
Date 1450.
- 199 **Temple Scripture Stand.**
Beautifully spaced and set in with perforated panel. Costly brass kanamono ornament.
Date 1550.
- 200 **Carved Altar Stand.**
Panel is carved with design of peony flowers, and brackets, maple leaves on current of water.
Date 1580. Height 18 in. Length 35 in.
Width 16 in.
- 201 **Carved Altar Stand.**
Both the panel and brackets are conventional peony carvings, brass kanamono ornaments. Fine example.
Date 1600. Height 13 in. Length 38½ in.
Width 15 in.

- 202 **Temple Carving.**
Pair of shishi in bamboo grove carved in oak. Good example.
Date 1750.
- 203 **Carved Temple Ornament.**
Peony flowers carved in frame of conventional cloud. High quality of carving and superb coloring.
Date 1520.
- 204 **Temple Carvings.**
Pair of shishi carved in oak. Fine example.
Date 1750.
- 205 **Old Palace Door.**
Tiger coming out of bamboo grove; painted on satsuma cedar by Maruyama Okio. Very rare example brought from Onodera Temple of Tamba.
Date 1770. Height 67 in. Width 34 in.
- 206 **Old Palace Door.**
Rare satsuma cedar, a peacock on rock, painted by Ganku. Splendid coloring.
Date 1740. Height 68 in. Width 37 in.
- 207 **Old Palace Door.**
Dragon rising from water, painted by Kano school artist.
Date 1700. Height 66½ in. Width 29 in.

208 **Carved Round Plaque.**

Cloud encircling a dragon, which is looking down upon a tiger with cub. All carved in high relief and gold lacquered.

Date 1700. Diameter $18\frac{3}{4}$ in.

209 **Large Gold Lacquered Ramma.**

Howo birds and peony flowers carved in very high relief and coated with gold lacquer. Came from a Buddhist temple in Kii.

Date 1590. Length $81\frac{1}{4}$ in. Width $21\frac{3}{4}$ in.

210 **Mate to the above.**

211 **Temple Ramma.**

Lion and peony design carved of oak.

Date 1650. Length 41 in. Width 11 in.

212 **Shrine Carving.**

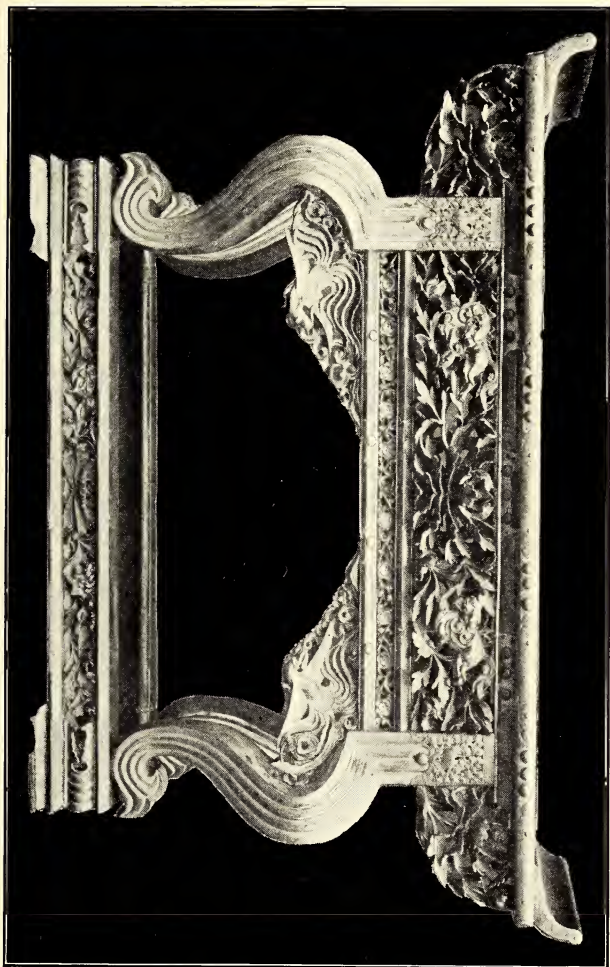
Pair of Ten-nin hovering in cloud, rich coloring.

Date 1580. Length $33\frac{1}{2}$ in. Height 7 in.

213 **Pair of Old Palace Doors.**

Each panel is painted with standing figure of girl, by Hishi Kawa Moronobu. This rare art was preserved at castle of Tokushima.

Date 1700. Height 68 in. Width $38\frac{1}{2}$ in.



- 214 **Pair of Brass Lanterns.**
Used in inner shrine of Buddhist temple.
Fire globe has carved crest of Tachibana.
Date 1830. Height 50 in.
- 215 **Pair of Brass Hibachi.**
Low bowl shape with four ears formed by
head of Dog-fu. Winged horse, Howo bird
in four panels on body of the jar. Finely
wrought Grecian border and conventional
foliage pattern at top.
Date 1800. Height $8\frac{1}{2}$ in. Diameter
 $11\frac{1}{2}$ in.
- 216 **Pair of Hanging Brass Lanterns.**
Square form, perforated with Karakusa
pattern.
Date 1800. Height 12 in.
- 217 **Bronze Water Pot.**
Repousse work, dragon in relief.
Date 1700. Height 11 in.
- 218 **Iron Jardiniere.**
Date 1650. Height $11\frac{1}{2}$ in. Diameter
13 in.
- 219 **Iron Jardiniere.**
Date 1650. Height 11 in. Diameter 13 in.
- 220 **Iron Jardiniere.**
Date 1650. Height 9 in. Diameter 13 in.
- 221 **Iron Jardiniere.**
Date 1550. Height $9\frac{1}{2}$ in. Diameter 13 in.

- 222 **Brass Rinto.**
Pair of hanging lamps with carved wood bracket.
Date 1750. Height 23 in.
- 223 **Brass Rinto.**
Pair of hanging lamps. Howo bird design is beautifully wrought out. Hang from elaborately carved wood bracket.
Date 1675. Height 17 in.
- 224 **Brass Temple Ornament.**
Lotus flowers and leaves in gold surfaced brass and arranged in brass vase. Rare example.
Date 1650. Height 50 in.
- 225 **Brass Temple Ornament.**
Lotus flowers and leaves in gold surfaced brass and arranged in brass vase.
Date 1650. Height 50 in.
- 226 **Large Palace Ramma.**
Carved of oak and colored. White crane, just on the point of perching on pine tree branch. Fine noble example of wood carving. The design is large and restful. This and following number came from famous palace of Momoyama built by Hideyoshi in 1584 and dismantled 1720. These Rammass are designed by Kano Yeitoku and Kano Souraku.
Length 113 in. Width 19 in.

- 227 **Large Palace Ramma.**
Kin-keicho bird perching on plum tree in bloom. Companion piece to the above.
- 228 **Old Temple Carving.**
Pair of ten-nins hovering over lotus pond. Emblem of light carved in center.
Date 1550. Length 47½ in. Height 9½ in.
- 229 **Small Zoshiki Ramma.**
Chrysanthemum flowers floating on water, coated with gold lacquer. Delicate example.
Date 1700. Length 40 in. Height 8½ in.
- 230 **Small Shrine Carving.**
Pair of Howo birds hovering in cloud. Uncolored oak.
Date 1680. Length 43 in. Height 6 in.
- 231 **Old Shrine Ramma.**
Two sacred dragons facing each other. Uncolored oak.
Date 1600. Length 54 in. Height 9 in.
- 232 **Old Temple Table.**
Inlaid panel is carved with design of dragon and cloud.
Date 1650. Height 22½ in. Length 59 in. Width 16½ in.

- 233 **Carved Temple Table.**
Inlaid panel is carved with design of tigers rambling in bamboo grove. Legs are carved in form of conventional cloud.
Date 1700. Height 29 in. Length 58½ in. Width 19 in.
- 234 **Old Shrine Ramma.**
Lotus flowers and leaves growing in water, coated with brown lacquer.
Date 1620. Length 48 in. Height 5 in.
- 235 **Old Shrine Ramma.**
Lotus flower design.
Date 1600. Length 43½ in. Height 6½ in.
- 236 **Old Carved Komainu.**
Carved of cedar and painted in green and red.
Date 1600.
- 237 **Old Carved Komainu.**
Carved of cedar, superb coloring.
Date 1450.
- 238 **Old Temple Carving.**
Peony blossom carved in oak. High quality. Uncolored.
Date 1550.

239 **Old Gable Carving.**

Carved of oak in form of conventional cloud.

Date 1500.

240 **Small Frieze Carving.**

Cranes in pine tree, carved of oak. Fine example.

Date 1700.

241 **Ancient Wood Carving.**

Thick uncolored oak carved with design of pine, plum tree and sago plant. The carver's name is not known. One of very early and rare examples of wood carving.

Date about 1300. Length 45 in. Height 13 in.

242 **Old Temple Ramma.**

Pair of ducks in iris pond carved in oak and beautifully colored.

Date 1760. Length $57\frac{1}{2}$ in. Height $14\frac{1}{2}$ in.

243 **Old Temple Carving.**

Pair of lions in peony garden. Costly example well preserved. Very rare and important.

Date 1580. Length $45\frac{1}{2}$ in. Height 14.

- 244 **Wood Panel.**
Spring ferns in relief in gold lacquer.
By Ritsuwo.
Date 1700. Length 22 in. Height 16½ in.
- 245 **Old Temple Carving.**
Shishi in cloud carved in oak. Specimen
of 14th century.
Date 1550. Length 19 in. Height 11 in.
- 246 **Old Temple Carving.**
Howo bird perching on kiri tree in
blossom, carved in oak and colored. The
style is simple and graceful. Came from
famous temple in suburb of Kioto. Par-
ticulars to be learned from the collector.
Date 1550. Length 17½ in. Height
9½ in.
- 247 **Small Shrine Ramma.**
Birds and flowers carved in cedar, colored
with various pigments with gold.
Date 1750. Length 41½ in. Height 7 in.
- 248 **Pewter Okimono.**
Standing Kwan-non, with elaborately
wrought-out stand.
Date 1720. Height 11 in.

249 Temple Incense Burner.

Rare quality of Chinese pewter of 16th century. Formerly belonged to a sacred Chinese temple at Port Arthur. Captured at the time of fall of the Port by Japanese army, 1894.

Height $7\frac{1}{2}$ in.

250 Large Pewter Tea Jar.

Entire body covered with dark gray spots. (See prefatory note).

Date 1550. Height 11 in.

251 Pair Chinese Pewter Candle Sticks.

The frame is wrought out in form of letter longevity. Finished with very elaborately carved floral design.

Date 1650. Height $18\frac{3}{4}$ in.

252 Chinese Pewter Koro.

Square with long curled handle, Chinese characters in low relief. Blue, gray patina.

Date 1450. Height $11\frac{1}{4}$ in.

253 Sixfold Painted Screen.

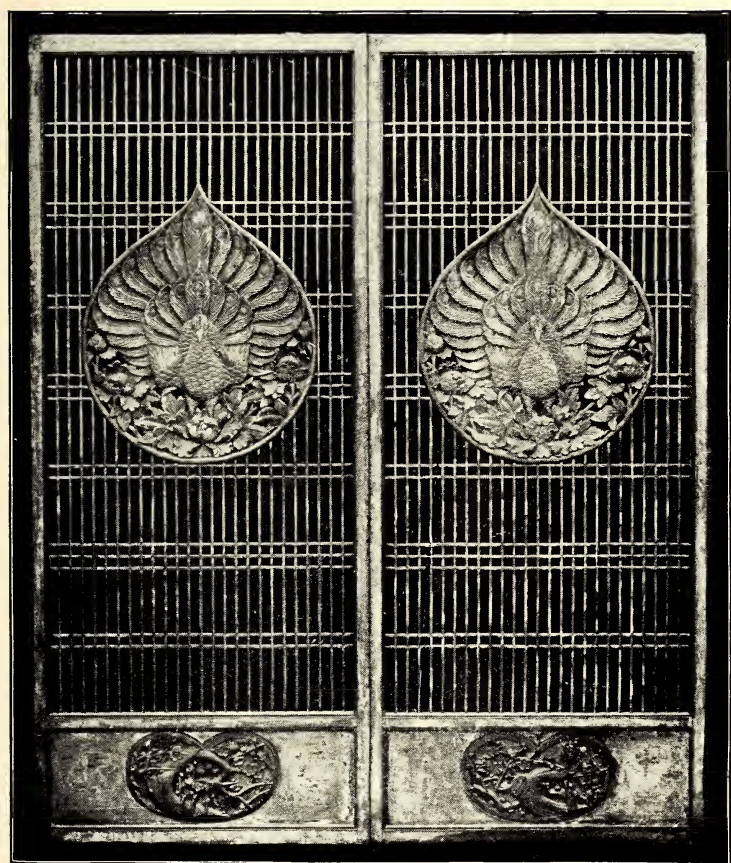
Cockerel under weeping willow tree, covered by snow. Painted by Taku-chu. Signed on the right.

Date 1800. Height 5 ft. 5 in.

254 Sixfold Painted Screen.

Morning glory vines, near by old well with associations of cockerels and hen. Companion to the above.

- 255 **Sixfold Painted Screen.**
Japanese chrysanthemum flowers.
Painted by Kano Yeitoku.
Date 1570. Height 5 ft 4 in.
- 256 **Companion to the above.**
- 257 **Old Temple Carving.**
In conventional cloud form, two ten-nins playing musical instruments, carved of oak and superbly colored. Sun and moon in cloud, carved at each side of panel. Came from a temple of Koyasan,
Date 1400. Length 63 in. Height 11 in.
- 258 **Small Temple Carving.**
Head erect dragon emerging from cloud, superb coloring. Important example.
Date 1600. Length 27 in. Height 6½ in.
- 259 **Old Temple Carving.**
Dragon and cloud, small but high quality of carving, coated with gold lacquer.
Date 1600. Length 21 in. Height 6½ in.
- 260 **Gold Lacquered Temple Cabinet.**
Panel is Howo bird design, each folding panel has lotus flower. Carving inserted with lattice work.
Date 1750. Height 43 in. Width 26 in.



261 Large Temple Carving.

Spirit of Thunder making descent from sky, violently striking the drums with the sticks. The lightning bolt and cloud effects are well portrayed with much imagination and skill. Treated with various colors and gold.

Date 1850. Height 38½ in. Width 26 in.

262 Fourfold Temple Gate Doors.

Beautifully spaced panels and skilfully carved lattice work are set at the top. Entire frame is constructed with cedar.

Date 1650. Height 73 in.

263 Pair of Ancient Temple Ramma.

Faint gold lacquer remains under the paint.

Date 1400. Length 24½ in. Width 13½ in.

264 Small Wooden Screen.

Shimabara scene painted on oak frame. Genroku Period.

Date 1650. Height 20 in. Width 22 in.

265 Zashiki Ramma.

Carved of cedar and colored.

Date 1700. Length 36 in. Width 13 ½ in.

266 Small Temple Carving.

In oak and colored.

Date 1600. Length 17½ in. Width 9½ in.

- 266A **Bronze Door Plate.**
Squirrels on grape vines. Recently made
at Osaka.
Height 13 in. Width 15 in.
- 266B **Bronze Door Plate.**
Two lions with precious stones, wrought
out in high relief. Recently made at Osaka.
Height 11 in. Width 23 in.
- 266C **Old Japanese Pewter Jar.**
Spotted black pewter, fine quality.
Date 1580. Height 8½ in.
- 266D **Old Pewter Okimono.**
Wise man playing koto on elephant's
back, with stand.
Date 1700. Height 11 in.
- 266E **Pewter Wine Bottle.**
Pine and bamboo design.
Date 1800. Height 5 in.
- 266F **Pair of Old Temple Lanterns.**
Made of cedar wood in form of hexagonal
dome. Set with beautifully spaced lattice
work and painted in green and gold.
Date 1570. Height 21½ in.
- 266G **Square Chinese Pewter.**
Figure pattern, bluish-gray tone. Mark
Unkan Rooku.
Date 1600. Height 3¾ in.

- 266H Pair Old Chinese Pewter Dishes.
Floral form edge is trimmed with brass.
Chinese cherry flowers carved on the center.
Mark Ganwajun.
Date 1660. Diameter 5 in.
- 266I Pewter Wine Pot.
Plum blossom and birds design.
Date 1780. Height 7 in.
- 266J Pewter Wine Pot.
Stork and pine tree carved on the body.
Date 1770. Height 5 in.
- 266K Pewter Wine Pot.
Pine tree design carved on body.
Date 1800. Height $7\frac{1}{4}$ in.
- 266L Pewter Wine Pot.
Carved decoration of pine tree.
Date 1720. Height 6 in.
- 266M Pewter Wine Pot.
Bird on pine tree carved on body. By
Suzuroku Kioto.
Date 1760. Height 7 in.
- 266N Pewter Wine Pot.
Karakusa carving.
Date 1770. Height $5\frac{1}{2}$ in.

- 266O **Pewter Tea Pot.**
Hexagonal design.
Date 1800. Height $7\frac{1}{2}$ in.
- 266P **Pewter Wine Jug.**
Used in Pekin Palace. Mark Choseitoku.
Date 1700. Height $15\frac{1}{4}$ in.
- 266Q **Pewter Vase.**
Tall vase inlaid with brass. A beautiful
design of bamboo grove. Made by Muso.
Date 1851. Height 12 in.
- 266R **Old Covered Pewter Box.**
In form of melon with vines and leaves.
Fine example.
Date 1600. Height $5\frac{1}{2}$ in.



THIRD AND LAST DAY'S SALE

Wednesday Afternoon at 2.30 o'clock,

Nov. 11, 1903

267 Long Temple Ramma.

Open design stork and gnarled plum tree in blossom. Fine coloring.

Date 1680. Length 50½ in. Height 8 in.

268 Old Temple Ramma.

Stork, plum blossoms and figures, treated with various colors.

Date 1700. Length 48 in. Height 7½ in.

269 Old Temple Ramma.

Flying pheasants, pine and bamboo.

Date 1780. Length 37½ in. Height 7 in.

270 Old Temple Ramma.

Plum blossoms and Matsu pine, treated with various colors and gold.

Date 1730. Length 36 in. Height 7½ in.

271 Post Hanging Panel.

Autumnal flowers, carved in relief and colored on cedar board. Rare specimen.

Date 1700. Height 38 in. Width 3½ in.

- 272 **Carved Upright Panel.**
Lion under peony flowers, carved of cedar
in high relief.
Date 1680. Length 36 in. Width 15½ in.
- 273 **Carved Round Plaque.**
Kwan-non seated among lotus flowers
and leaves, carved of Jindai Cedar and
colored.
Date 1650. Diameter 21 in.
- 274 **Carved Upright Panel.**
Tiger and bamboo, carved of cedar and
painted. Important example.
Date 1790. Height 44 in. Width 17¾ in.
- 275 **Old Temple Carving.**
Lion, carved of oak, green tint.
Date 1500. Length 18½ in. Width 10 in.
- 276 **Small Ramma.**
Lion on a rock.
Date 1750. Length 23½ in. Width 7⅓ in.
- 276A **Small Ramma.**
Same design as above.
Length 23½ in. Width 7⅓ in.
- 277 **Carved Altar Stand.**
Peony flower design, the brackets are
conventional cloud design.
Date 1650. Height 11 in. Length 32½ in.
Width 13½ in.

278 Carved Altar Stand.

Lion and peony carving, ornamented with elaborately finished brass kanamono.

Date 1650. Height 12 in. Length 33 in.
Width 15 in.

279 Carved Altar Stand.

Lion and peony design with carved Howo bird brackets.

Date 1600. Height 10½ in. Length 29 in.
Width 14 in.

280 Upright Zashiki Ramma.

Bamboo tree, carved of cedar and painted in light green. Rare example.

Date 1700. Height 37½ in. Width 11 in.

281 Shrine Ramma.

Peony flowers, dull red and green. Fine rare quality.

Date 1500. Length 39 in. Width 4½ in.

282 Temple Ramma.

Peony blossoms, carved of oak, very rare example.

Date 1650. Length 37 in. Width 8 in.

283 Carved Round Placque.

Rabbit jumping over water, carved of oak and colored. Gold frame, metal ornaments. By Maruya Takumi.

Date 1680. Diameter 18¾ in.

284 Pair Old Temple Carvings.

Conventional peony flowers, carved Satsuma cedar and painted in red and green. Attributed to Jingoro the First.

Date 1590. Length $25\frac{3}{4}$ in. Width 7 in.

285 Temple Scripture Stand.

Two lower panels are carved in low relief, the crests of Rinbo. Small carved panel on the top is conventional peony design. Richly carved and colored, brass kanamonos.

Date 1550. Height 16 in. Length 33 in. Width 15 in.

286 Carved Altar Stand.

Peony flower design, carved on panels. Very costly example.

Date 1580. Height 14 in. Length 30 in. Width $13\frac{1}{2}$ in.

287 Carved Altar Stand.

Floral design, carved in three panels. Gold lacquered.

Date 1700. Height $14\frac{1}{2}$. Length $29\frac{1}{2}$ in. Width 13 in.

288 Pewter Wine Jug.

Panels of dragon pattern in low relief.

Date 1690. Height $5\frac{1}{2}$ in.

289 Pair of Pewter Tea Jars.

Black, with skilfully carved decorations and turquoise blue knobs.

Date 1500. Height $3\frac{3}{4}$ in.



346

- 290 **Old Pewter Tea Caddy.**
Fine quality of Ashikaga period. Probably earliest Japanese pewter ware. Floral designs carved on the body. Blue gray patina.
Date 1450. Height $3\frac{1}{4}$ in.
- 261 **Chinese Pewter Tea Caddy.**
Figures inlaid in brass. Mark Joshun.
Date 1700. Height $5\frac{3}{4}$ in.
- 292 **Pewter Tea Caddy.**
Peach design, inlaid in brass. Pale blue gray patina.
Date 1620.
- 293 **Chinese Pewter Tea Pot.**
Ancient Tibetan pattern in relief. Rare example. Mark Seiyeiko.
Date 1720. Height $6\frac{1}{4}$ in.
- 294 **Chinese Pewter Tea Pot.**
Hexagonal form, Chinese letters in relief. Mark Kinko.
Date 1680. Height $6\frac{1}{2}$ in.
- 295 **Chinese Pewter Tray.**
Round form, minute medallion pattern in low relief.
Date 1700.

- 296 **Large Pewter Round Tray.**
Inlaid in brass with design of plum tree
and bird.
Date 1650. Diameter $13\frac{1}{4}$ in.
- 297 **Old Chinese Pewter Pot.**
Tall graceful form, with long spout, pro-
fusely ornamented with carvings of floral
design. Grayish-blue patina.
Date 1600. Height $13\frac{1}{2}$ in.
- 298 **Large Pewter Dish.**
Black spotted patina. Used for banquet.
Rare example.
Date 1560. Diameter 18 in.
- 299 **Chinese Pewter Vase.**
Flowers and birds decoration wrought out
in relief. Fine example. Mark Shinshingen.
Date 1650. Height $6\frac{1}{4}$ in.
- 300 **Old Zashiki Ramma.**
Iris growing in pond, charming design
well executed. Color is superb. Important
specimen.
Date 1680. Length $73\frac{1}{2}$ in. Height 14 in.
- 301 **Old Temple Ramma.**
Iris flowers blossoming in water, the style
though somewhat conventional has the
freedom of Kano school. Entire surface is
coated with gold lacquer.
Date 1700. Length 73 in. Height $12\frac{1}{2}$ in.

302 Carved Temple Scripture Cabinet.

Carved ramma design of squirrels in grape vines at top; at base of each panel which opens with hinges, has carving of bamboo grove. Lined with gold brocade.

Date 1700. Height 52 in. Width 42 in.

303 Carved Shrine Ramma.

Cherry tree in blossom carved in cedar in minute detail. Magnificently gold lacquered,

Date 1720. Length 48 in. Height 7 in.

304 Narrow Shrine Ramma.

Chrysanthemum flowers and leaves, carved in cedar and colored.

Date 1680. Length $34\frac{1}{2}$ in. Height $3\frac{1}{2}$ in.

305 Pair of Small Ramma.

Lotus plants in bloom, growing in water.

Date 1650. Length 19 in. Height $5\frac{1}{2}$ in.

306 Carved Temple Table.

With richly carved panels and brackets of peony, chrysanthemum flowers and Howo bird designs. Coated with gold lacquer and ornamented with gold surfaced brass kanamono.

Date 1500. Height $24\frac{1}{2}$ in. Length 43 in. Width $17\frac{1}{2}$ in.

- 307 **Old Temple Panel.**
Ten-nin holding a lotus flower hovering among clouds, carved in oak and colored. Rare example of thirteenth century.
Length 47½ in. Height 16 in.
- 308 **Old Palace Panel.**
Pair of Shishi jumping among peony cliff. Date 1350. Length 47 in. Height 16 in.
- 309 **Four Small Square Carvings.**
Peony blossom and foliage, no two alike in arrangement. Coated with gold lacquer. Date 1670. Length 8 in. Height 6 in.
- 310 **Pair of Lotus Carvings.**
Narrow compact carving representing lotus flowers, buds and leaves growing out of the water. Delicately lacquered in gold. Date 1580. Height 23½ in.
- 311 **Round Carved Panel.**
Coiled dragon holding sword on tail. Emblem of sacredness. Date 1550. Diameter 11½ in.
- 311A **Round Carved Panel.**
Emblem of longevity. Dull red coloring. Date 1550, Diameter 11 in.

312 Incense Burner—Lion and Cub.

The remarkable specimen in brass represents the mother with one paw resting on a ball, her head turned snarling at the small cub on her back pulling at her ears in play. The figure rests on a beautifully wrought stand ornamented with Torsugana crest in low relief.

Date 1750. Height 17 in.

313 Pair of Brass Altar Candle Sticks.

Heron standing on back of turtle and supporting lotus seed pod and leaves in bill.

Date 1750. Height 42 in.

314 Pair of Brass Vases.

Dragon in high relief coils about the body of the vase. Fine wave pattern border about the flaring top.

Date 1750. Height 15 in.

315 Brass Hibachi.

Magnificent yellow bronze, shishi head handles. Dragon carved on the stand.

Date 1730. Height 17 in. Diameter 16 in.

316 Pair Pewter Vases.

Crest Win-en and wise man in relief. Dark gray patina. Important specimen.

Date 1780. Height 8½ in.

- 317 **Pair Pewter Bottles.**
Sea shells and wave design carved on the bottles.
Date 1750. Height $7\frac{1}{2}$ in.
- 318 **Pewter Dish with Cover.**
Conventional ivy pattern carved all over the body and cover. Used by Dymio Banquet party. By celebrated Suzuya Yayemon of Kioto.
Date 1675. Height 4 in.
- 319 **Pewter Bowl.**
Rim is carved and perforated with wave design. Beautiful silvery tone. Mark Nagahama Uhei.
Date 1750. Height $6\frac{1}{2}$ in.
- 320 **Pewter Bowl.**
Fine form, outer edge has band of elaborately carved design. Rare example.
Date 1660. Height $4\frac{1}{4}$ in.
- 321 **Chinese Pewter Dish with Cover.**
Jade handles, brass rim, the cover is surmounted with cicada. Mark Gan-wa-Jun.
Date 1550. Height $7\frac{1}{4}$ in.
- 322 **Pewter Box with Cover.**
Delicate Howo bird design carved on the body and cover. Grayish-blue patina.
Date 1680.

- 323 **Pewter Fruit Dish.**
Perforated with cherry flower pattern and elaborately wrought tripods.
Date 1750. Height 9 in.
- 324 **Large Pewter Tea Caddy.**
Minutely carved with design of birds and flowers. Mark Renjun.
Date 1660. Height 6 in.
- 325 **Chinese Pewter Wine Pot.**
With peculiar curled handles, good quality.
Date 1500. Height 6½ in.
- 326 **Large Pewter Tea Jar.**
Blue-gray tone, patina has the quality like Shakudo bronze, faint spot marks all over the body. Made by the order of Hideyoshi about 1575. (See the prefatory note).
Height 14¼ in.
- 327 **Large Pewter Tea Jar.**
Fine silver patina, noble specimen. Made by the order of Prince Tokugawa. Mark Suzuya Yohei. (See the prefatory note).
Date 1580. Height 30½ in.
- 327A **Pair of Old Shrine Doors.**
Painted grayish green, carvings of plum flowers in low relief. Iron plate ornaments. Came from an old Buddhist temple in Yamato.
Date 1700. Height 76 in. Width of each door 38½ in.

328 Old Palace Sliding Doors (4 in set).

Four doors are constructed of rare Satsuma cedar. Grayish-blue sea waves tossing between the masses of rocks and overhanging pine trees and Japanese sea birds or chidori flying about over the water, a spacious sky over distant horizon is delicately portrayed with strips of cloud. Painted by Tosa Mitsushige.

Date 1540. From Taimadera Yamato. Height $7\frac{1}{2}$ in. Width 37 in. each.

329 Old Temple Door.

Painted with design of lotus flowers growing in pond.

Date 1750. Height 68 in. Width 28 in.

330 Carved Zashiki Ramma.

Fighting cocks under cherry tree in full blossom, carved of magnolia tree. Superb coloring.

Date 1750. Length $35\frac{1}{2}$ in. Width $13\frac{1}{2}$ in.

331 Pair of Ancient Temple Doors.

Entire ground is covered with gold lacquer. Lotus flowers in full blossom painted by Soami. These doors came from partially demolished temple of Nanjenji.

Date 1450. Height $60\frac{1}{2}$ in. Width 22 in. each.



348

347

332 Narrow Upright Panel.

Uncolored oak, wise man with his page standing on rock under huge pine tree. Fine grayish color caused by age.

Date 1580. Height 42 in. Width 11½ in.

333 Ancient Wood Carved Panel.

Dancing Yasha, carved in high relief and lacquered, Came from old temple in Yamato. Rare and valuable example of wood carving.

Date about 900. Height 51 in. Width 16 in.

334 Large Temple Gate Door.

Twofold, constructed with solid Yoshino oak, upper panels are carved with design of plum flowers, in relief. Pale green tone.

Date 1500. Height 76 in. Width 38½ in.

335 Carved Temple Table.

Panels of various floral designs executed in rich manner and brackets and supporters are carved with design of figures and shishi animals, all in solid oak and richly colored.

Date 1680. Height 29½ in. Length 54 in. Width 36 in.

336 Carved Palace Panels.

Tiger in bamboo grove, carved in Yoshino cedar and colored in rich green and yellow.

Date 1800. Height 36 in. Width 16½ in. each.

337 Ancient Wood Carving.

Taikobo meditating in mountains, uncolored oak. Signed Jingoro. Very interesting example.

Date 1610.

338 Carved Temple Table.

Panels in brackets are carved with design of peony flowers and shishi. Interior brackets are of Howo bird and cloud design. Superbly proportioned carved legs. Profusely ornamented with gold plated kanamono.

Date 1400. Height 36 in. Length 56 in. Width 24 in.

339 Carved Temple Table.

The sides and brackets are carved with the design of lotus flowers, curved legs in form of liquid element, combined colors of uncolored oak and black and red lacquer.

Date 16 in. Length 54 in. Height 30 in.

340 Carved Temple Cabinet.

Carved ramma, stork and cloud design at top, four panel doors, heron and lotus carving with plain gold lattice setting. Gold surfaced brass ornaments. Dull green brocade lining.

Date 1700. Height 46½ in. Width 37 in.

341 Temple Porch Ramma.

Design of peony blossoms carved of oak.
Fine gray tone effected by age. Came from
Buddhist temple in Province of Awa.

Date 1700. Length 40 in. Width 21½ in.

342 Companion Piece to the above.

Length 40 in. Width 21½ in.

343 Two-fold Lattice Work Screen.

Carved panels with conventionalized peacocks and peony flowers and lined with old green silk. From the peacock temple of Tokugawa.

Date 1615. Height 70 in. Width 30½ in.

344 Old Lacquered Shrine Doors.

Each panel of which is mirror black lacquered divided into sections; each section ornamented with delicately carved and colored panels representing plum tree in blossom, bamboo and peacock. Corners of each section are ornamented with gold plated brass kanamono. These remarkable examples of shrine doors are made by combined effort of best cabinet makers and wood carvers of Mito, in Province of Hitachi by the order of Princess Tokugawa, known as Oman-no-kata who had a temple erected at Minobu in Province of Kai, as a memorial of Tokugawa Jyeyasu, her deceased husband, 1615 A.D. This temple was destroyed by fire in 1875 and what was saved and preserved came to the hand of the collector.

Since this temple was consecrated to Kujaku-Myowo or Goddess of the Peacock, the design of the peacock prevails in the ornamentation of the temple.

Height 57 in. Width $14\frac{1}{2}$ in. each.

345 Four Panel Screen.

Each panel ornamented with carving, peacock with spread tail feathers, in two outer panels the bird faces directly front, and two center panels show the birds from the side facing each other. The screen is lined with heavy green donsū silk. From destroyed temple erected for Kujaku-Myowo or goddess of peacock.

Date 1615 A.D. Height 75 in. Width $15\frac{1}{2}$ in.

346 Carved Temple Ramma.

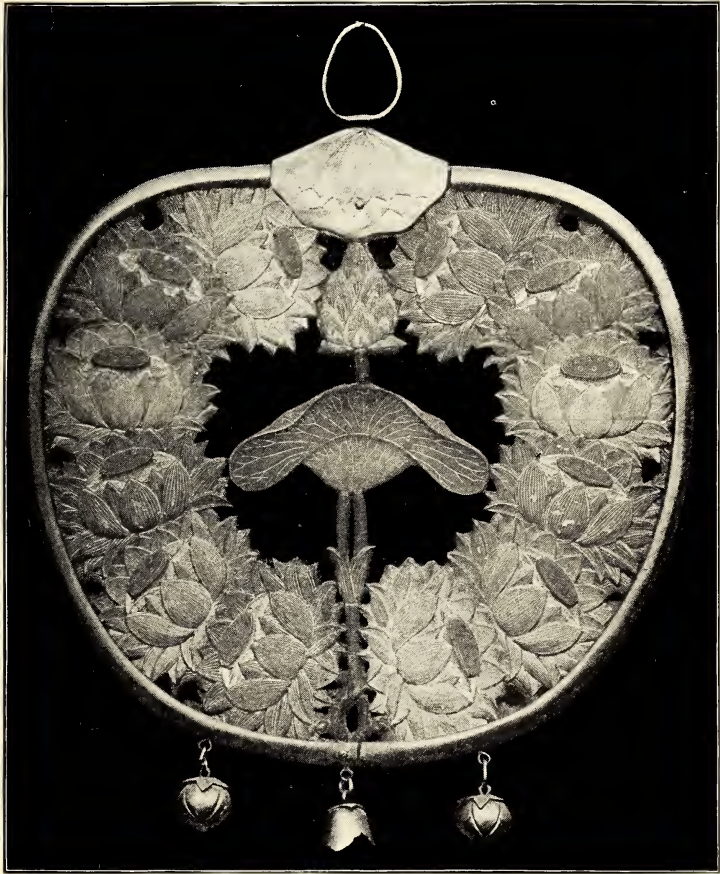
Shishi walking among peony flowers. Pedigree of the carving obtained by the collector. Master work of chisel and extraordinarily fine coloring place this as one of the most important specimens carved by the first Jingora.

Date 1550. Length 45 in. Height 25 in.

347 Ancient Temple Ramma.

Uncolored oak, design of Oshidori ducks on water. Leaves of kokotsu water plant in left. All carved in low relief. This carving and one following this number are two of most rare examples fortunately preserved from early Ashikaga era.

Date 1400. Length 74 in. Height 10 in.



348 Carved Wooden Ramma.

Mountain pheasant perching on an old branch of tree between masses of rock. Spray of bamboo leaves at center. Companion piece to the above.

349 Pair Carved and Gold Inlaid Kemans.

Wreath of lotus flowers in full blossom. Each petal is inlaid with delicate hues of gold. Pigments used in tinting the blossoms are of the most costly kind. Lotus leaves and bud in center of wreath. Their origin is from a curious custom of early Hindoo Buddhism. Ladies of rank were accustomed to present to the temple, as ex-votos, their jewelled coiffures; but in time these keman wrought of metal and beads or carved of wood were substituted for them, and the hanging strings and bells for the strings of jewels pendant at either side of the head. These are two of the four keman which hung in the inner temple post of Tono-mine palace in Yamato. As a wood carving it is of great merit because of the high quality of workmanship and magnificence of color.

Date 1500. Height 9 in. Weight 9½ in.

350 Carved Shrine Ramma.

Framed in gold lacquer with costly kanamono. Design peony shrub spreading out leaves and flowers from one root at center. Rare design in wood carving executed with masterly skill. The temple from which it was built by the order of Japanese Emperor in 16th century. Important specimen.

Length 54 in. Height 9½ in.

351 Shinto Temple Ramma.

Uncolored oak carved with design of conventional lotus flowers and leaves. The superior style and quality may be well compared to those preserved at famous Nijio Palace. Combined beauty of grain of wood and tone, with charming design in addition, makes these three as most worthy of all Japanese carvings.

Date 1680. Length 80 in. Width 19 in.

352 Shinto Temple Ramma.

Companion to the above. The design little differs from the preceding. It will be observed that the carver was a great master of design.

Length 80 in. Width 19 in.

353 Shinto Temple Ramma.

Another exquisite specimen, the carver was truly inventive, indeed the collector and his associates never before have seen such noble design in wood carving either in Shinto or Buddhist temples in Japan.

Length 80 in. Width 19 in.

354 Carved Temple Karado.

Rarest and most costly example of temple door ever brought over by the collector. Superb design of Howo birds flying through carved lattice work is admirably executed.

Date 1550. Height 57½ in. Weight 15 in.

355 Old Temple Ramma.

Dragon and cloud, the subject is often used and common but in composition and execution this specimen holds high rank in the collection. Uncolored oak.

Date 1600. Length 72 in. Height 12 in.

356 Old Temple Ramma.

Carved in solid oak, dragon and tiger facing each other. Plum blossoms and bamboo tree and cloud, all carved with masterly accomplishment. Uncolored oak.

Date 1700. Length 74 in. Height 14 in.

357 Four-fold Screen.

Panels of carved lattice in floral design, gold lacquered square, carved panels at base, design peony and plum blossoms. Superb coloring due to its age. Important specimen in the collection.

Date 1550. Height 49½ in. Width 12½ each.

358 Four-fold Temple Screen.

Each fold has carved panel, pheasant in maple grove, set in opaque green lattice, lined with silk brocade.

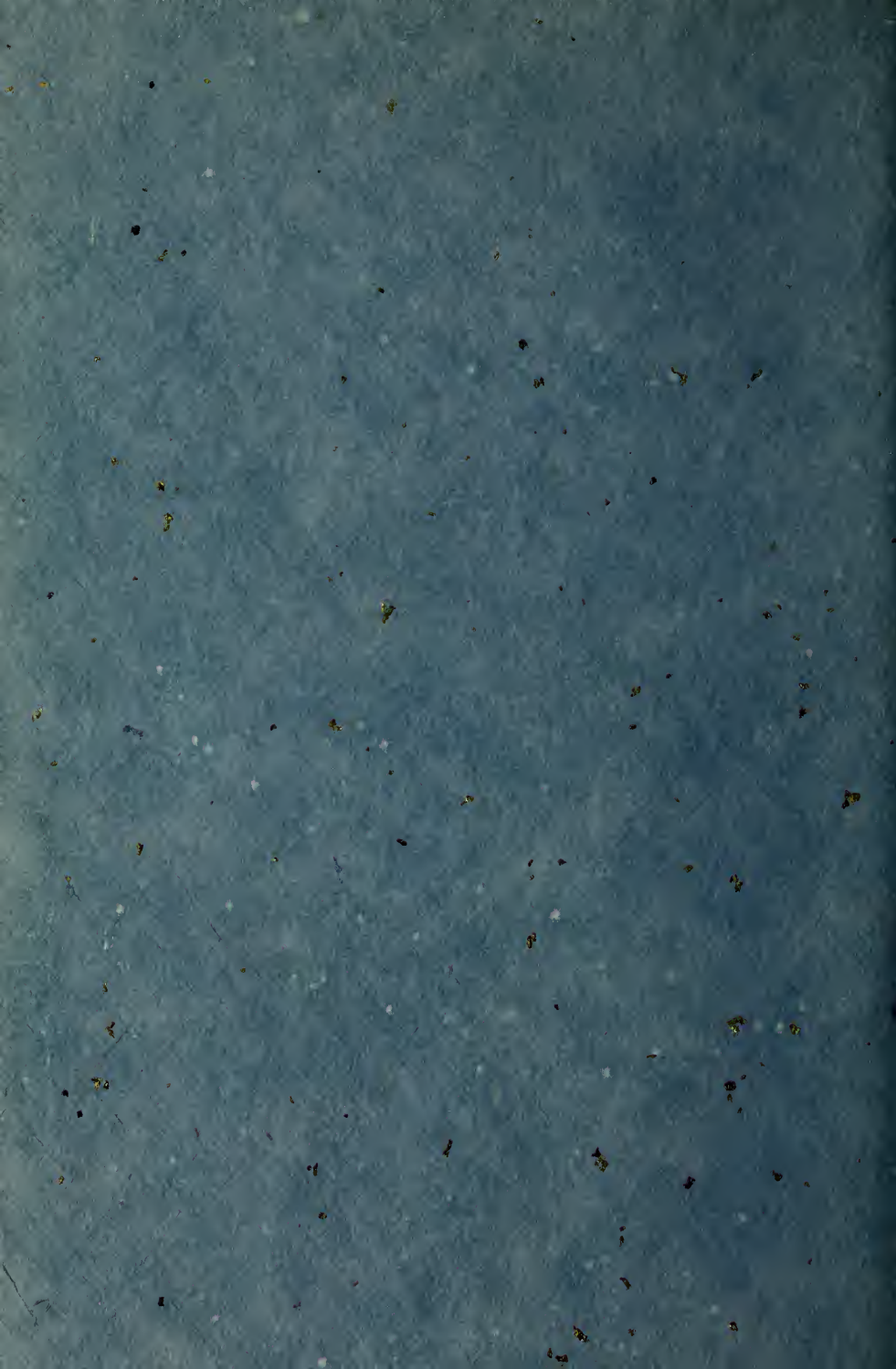
Date 1700. Height 75 in. Width 15½ in. each.

359 Shrine Ramma.

Chrysanthemum flowers enveloped in conventionalized leaves. Elaborate carving.

Date 1750. Length 40 in. Width 7½ in.

- 360 **Shrine Ramma.**
 Eagle and peacock hovering in cloud, very elaborately carved and coated with lacquer.
 Date 1780. Length 40½ in Width 8 in.
- 361 **Jingoro Dragon.**
 Massive carved Ramma by Jingoro. Dragon writhing in waves exquisitely colored.
 Date 1600. Length 55 ft. Height 10½ ft.
- 362 **Sixfold Painted Screen.**
 Japanese geese flying about reed grass. Superb tone of oxidised silver. Painted by Soami.
 Date 1450. Height 5 ft. 6 in.
- 363 **Sixfold Painted Screen.**
 Princess Genjio holding sacred harp in her arms, crossing the sea on a dragon's back, accompanied by Rinjin, or King of the Sea. Illustration from famous Noh dancing. Painted by Yokoyama Kwazan and is considered as one of his most important works.
 Date 1830. Height 5 ft, 6 in.
- 364 **Sixfold Painted Screen.**
 Wistaria festivity in palace garden showing lady's quarter, Various prang grasses in blossom and general view of enclosed landscape is masterfully portrayed. Superb coloring. By Tosa Mitsuyoshi.
 Date 1725. Height 5 ft, 6 in.
- 365 **Sixfold Painted Screen.**
 Companion to the preceding, showing nobles, quarter.





SMITHSONIAN INSTITUTION LIBRARIES



3 9088 01768 2071

SI
3091

